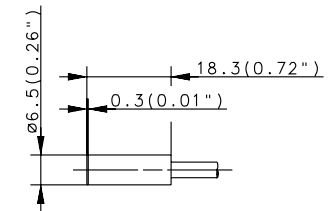
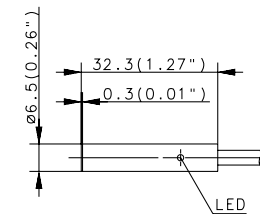
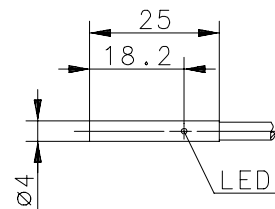
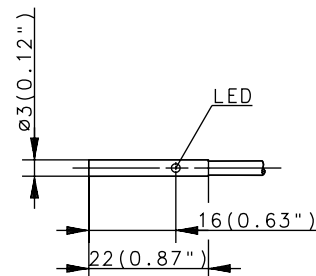


INDUCTIVE SENSORS Type Ø 3 mm, Ø 4 mm, Ø 6.5 mm



Type	Ø 3 mm	Ø 4 mm	Ø 6.5 mm	Ø 6.5 mm		
Enclosure material	Stainless steel 1.4305	Stainless steel 1.4401	Stainless steel 1.4401	Stainless steel 1.4401		
Type of installation	flush	flush	flush	flush		
Nominal sensing distance	0.6 mm	0.8 mm	1.5 mm	1.5 mm		
Type of connection	Cable 2 m	Cable 2 m	Cable 2 m	Cable 2 m		
Special feature						
PNP	DC	NO contact	6502999019 KIB-D03PS/0,6-KL2PU	6532999001 KIB-D04PS/001-KL2I	6502999010 KIB-D06PS/1,5-KL2	6502999034 KIB-D06PS/1,5-K2VPU
PNP	DC	NC contact	6502799007 KIB-D03PÖ/0,6-KL2PU	6532799001 KIB-D04PÖ/001-KL2I	6502799011 KIB-D06PÖ/1,5-KL2	
NPN	DC	NO contact		6532399001 KIB-D04NS/001-KL2		
NPN	DC	NC contact		6532199001 KIB-D04NÖ/001-KL2		
Technical data						
Rated operating voltage range	U_B	10–30 VDC	10–30 VDC	10–36 VDC	10–36 VDC	10–36 VDC
Rated operating current	I_e	≤ 100 mA	≤ 200 mA	≤ 200 mA	≤ 200 mA	≤ 200 mA
Max. switching voltage	F	3000 Hz	1000 Hz	1000 Hz	1000 Hz	1000 Hz
Short circuit-protection		cyclic	cyclic	cyclic	cyclic	cyclic
Function/operating voltage indicator		LED/-	LED/-	LED/-	LED/-	-/-
Mechanical data						
Ambient temperature (min/max)		-25°C/+70°C	-25°C/+70°C	-25°C/+70°C	-25°C/+70°C	-25°C/+70°C
Protection class in accordance with IEC 529, EN 60529		IP67	IP67	IP67	IP67	IP67
Connection		3 x 0.055 mm ²	3 x 0.14	3 x 0.14 mm ²	3 x 0.14 mm ²	3 x 0.14 mm ²
Approvals						

= IO-Link





INDUCTIVE SENSORS Type Ø 6.5 mm, M4

Type	Ø 6,5 mm	Ø 6,5 mm	Ø 6,5 mm	M4
Enclosure material	Stainless steel 1.4401	Stainless steel 1.4401	Stainless steel 1.4401	Stainless steel 1.4305
Type of installation	flush	flush	non-flush	flush
Nominal sensing distance	1.5 mm	1.5 mm	2 mm	0.6 mm
Type of connection	Connector M8	Cable 5 m	Connector M8	Cable 2 m
Special feature		Short type		
PNP	DC	NO contact	6502999012 KIB-D06PS/1,5-KLSM8	6602999460 KIB-D06PS/1,5-KLSV
				6502999013 KIN-D06PS/002-KLSM8
				6502999020 KIB-M04PS/0,6-KL2PU
PNP	DC	NC contact		
NPN	DC	NO contact		
NPN	DC	NC contact		
Technical data				
Rated operating voltage range	U_B	10–36 VDC	10–36 VDC	10–36 VDC
Rated operating current	I_e	≤ 200 mA	≤ 200 mA	≤ 100 mA
Max. switching voltage	F	1000 Hz	1000 Hz	3000 Hz
Short circuit-protection		cyclic	cyclic	cyclic
Function/operating voltage indicator		LED/-	LED/-	LED/-
Mechanical data				
Ambient temperature (min/max)		-25°C/+70°C	-25°C/+70°C	-25°C/+70°C
Protection class in accordance with IEC 529, EN 60529		IP67	IP67	IP67
Connection		M8 x 1	3 x 0.14 mm ²	M8 x 1
				3 x 0.055 mm ²

Approvals

